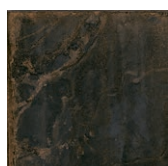
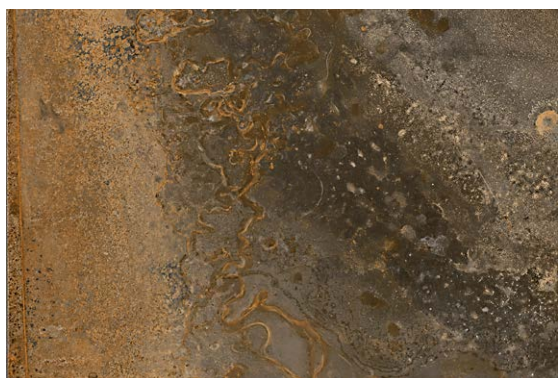


OXIDART



BLACK



COPPER



IRON



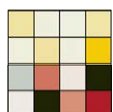
SILVER



PATCHWORK DARK



PATCHWORK LIGHT



V3 Moderate Variation
V4 Random Appearance
(Patchwork only)

Regularity Characteristics

Technical Features	Norms	Required Standards	Value
Length & Width	ISO 10545-2	± 0,6%	Compliant
Thickness		± 5,0%	Compliant
Straightness of Sides		± 0,5%	Compliant
Rectangularity		± 0,6%	Compliant
Surface Flatness		± 0,5%	Compliant
Surface Quality		95% min. free of visible defects	Compliant

Structural Characteristics

Technical Features	Norms	Required Standards	Value
Water Absorption	ISO 10545-3	≤ 0,5%	< 0,1%

Bulk Mechanical Characteristics

Technical Features	Norms	Required Standards	Value
Breaking Strength	ISO 10545-4	S ≥ 1300 N	S Compliant
Modulus of Rupture		R ≥ 35 N/mm ²	R > 45 N/mm ²

Surface Mechanical Characteristics

Technical Features	Norms	Required Standards	Value
Mohs Hardness	EN 101	≥ 5	5
Resistance to Deep Abrasion	ISO 10545-6	≤ 175 mm ³	Not Provided By Manufacturer

Thermal and Hygrometric Characteristics

Technical Features	Norms	Required Standards	Value
Coefficient of Thermal Linear Expansion	ISO 10545-8	Test Method Available	Not Provided By Manufacturer
Thermal Shock Resistance	ISO 10545-9	Test Method Available	Not Provided By Manufacturer
Resistance to Crazeing	ISO 10545-11	Required	Resistant
Resistance to Frost	ISO 10545-12	Must Not Produce Noticeable Alteration to Surface	Resistant

Safety Characteristics

Technical Features	Norms	Required Standards	Value
Dynamic Friction Coefficient	ANSI 137.1-2012 (D.C.O.F.)	≥ 0,42 WET	≥ 0,42 WET
Static Coefficient of Friction	ASTM C 1028 (S.C.O.F.)	Slip Resistant (≥ 0,60)	Dry μ > 0,6 Wet μ > 0,6
Non-Slip Classification	DIN 51130	Basing on the Environment or on the Working Area	R10
	DIN 51097		A

Chemical Characteristics

Technical Features	Norms	Required Standards	Value
Resistance to Household Chemicals and Swimming Pool Salts	ISO 10545-13	Class GB	Reistant
Resistance to Acids		Class C min.	Unaffected
Resistance to Staining	ISO 10545-14	≥ 3	Reistant

Stocked Sizes (Nominal)

Dimensions	Available Colors
12"x24"x10mm Field Tile	Black, Copper, Iron, Silver
24"x48"x10mm Field Tile	Black, Copper, Iron, Silver
3"x24"x10mm Bullnose	Black, Copper, Iron, Silver
2"x2" on 12"x12" Mosaic	Black, Copper, Iron, Silver
8"x8" Patchwork Tile	Patchwork Dark, Patchwork Light

**Random Carton Mix of Nine Basic Design Variations. Specific Designs May Not Be Chosen.

Special Order Sizes* (Nominal)

Dimensions	Available Colors
20x20 - 8"x8" Field Tile	Black, Copper, Iron, Silver
60x60 - 24"x24" Field Tile	Black, Copper, Iron, Silver
90x90 - 36"x36" Field Tile	Black, Copper, Iron, Silver
120x120 - 48"x48" Field Tile	Black, Copper, Iron, Silver
30x120 - 12"x48" Décor Tile	Décor Dark, Décor Light
27x32,5 - 101/2"x13" Hexagon Mosaic	Black, Copper, Iron, Silver
22,5x45 - 9"x18" Muretto	Black, Copper, Iron, Silver

* 12 - 14 Week Lead Time. Some additional trim and decor pieces are available.

Recycled Content

> 20%
