

This bulletin provides installation instructions for backlit slabs, including thickness, lighting, surface prep, and stamp removal. Following these steps helps fabricators and installers achieve the best lighting results and avoid visible distractions, ensuring a finished look that meets customer expectations.

INSTALLATION RECOMMENDATIONS

Slab Thickness

- Use 2cm thickness for best lighting and diffusion results.
- Thicker slabs may reduce translucency and brightness.

Adhesives & Sealants

- Only use adhesives compatible with translucent or backlit applications to avoid discoloration.
- We recommend following manufacturer guidelines for curing and bonding to prevent visibility issues.

Lighting Design

- Meet with a licensed lighting professional to evaluate the specific installation site.
- Test light sources (LEDs, panels, strips) on product samples before installation.
- Ensure even light distribution; consider diffusers or light panels to avoid hot spots.
- Use lighting systems that minimize heat transfer to protect adhesives and the slab

Surface Preparation

- We recommend to remove all factory-applied stamps, ink markings, or branding from the back of the slab prior to installation.
- To remove factory-applied markings, carefully use a grinder to lightly buff the back of the slab. Avoid excessive pressure to prevent surface damage. Always follow Quartz fabrication safety guidelines during material processing.
- Ensure the surface is free of dust, adhesives, or contaminants that may interfere with light diffusion.

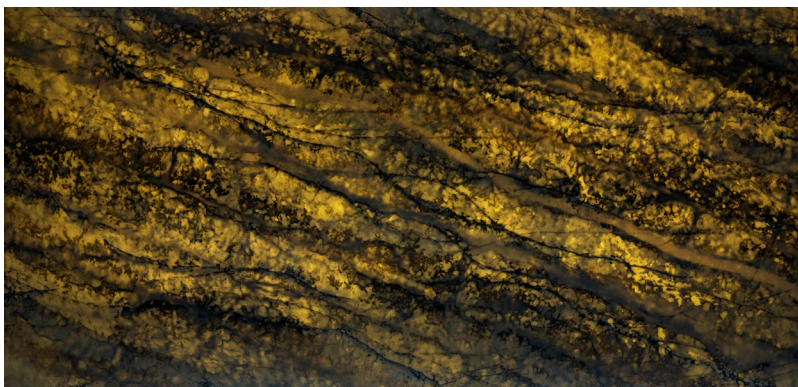
On-Site Installation Trial

- Always conduct a full mock-up installation with the intended lighting system prior to final placement.
- A fabricator should review results with the client to confirm satisfaction before completing installation.

ADDITIONAL NOTES & SAFETY DISCLAIMERS

- Backlit slab installations should be performed by qualified fabricators and lighting professionals.
- Improper installation may void warranties and could result in customer dissatisfaction.
- Cleaning the surface with harsh abrasives could affect translucency or light diffusion over time.
- These guidelines are recommendations only and should be adapted to specific project conditions.

Architectural Surfaces bears no liability for the design, execution, or outcome of any backlit installation. Warranty obligations extend solely to the slab material under our standard warranty terms.



Atlantis Azul (BACKLIT & BOLD®)
Please note, backlit results may vary.